



EPV zParser Run as System Service



Supporting
EPV zParser V15

November 2019



All the mentioned trademarks belong to their respective companies.

EPV Technologies contact details:

EPV Technologies
Viale Angelico, 54
00195 Roma
Tel. 06 86210880
Fax. 06 86387461
E-mail: epvtech@epvtech.com
WEB: <http://www.epvtech.com>



Contents

1	EPV zParser Service in Windows	- 5 -
2	EPV zParser Service in Linux.....	- 9 -
2.1	SystemV (SysVinit) service - deprecated	- 9 -
2.2	SystemD service - recommended.....	- 10 -
3	Customer support	- 11 -
	Related documentation.....	- 12 -



About this manual

This manual is intended to help anyone who wants to configure and run EPV zParser as System Service.

Terminology

The string \$EPVROOT used in this manual represents the path to your EPV installation folder.
The string \$ProfileName represents the name of your EPV user profile.



1 EPV zParser Service in Windows

To create the EPV zParser Windows Service you can use the EPV Setup program.

Please notice that ‘Create’ and ‘Delete’ operations require Administrator privileges, while ‘Start’ and ‘Stop’ doesn’t.

- 1) Open \$EPVROOT/SETUP folder, right click on EPV_Setup.exe and select ‘Run as Administrator’. Check that the ‘Current Profile’ is the one that you want to use within the service and, if it’s not, click on ‘Profile Options’ => ‘Load Profile’ to select the right one (Figure 1).

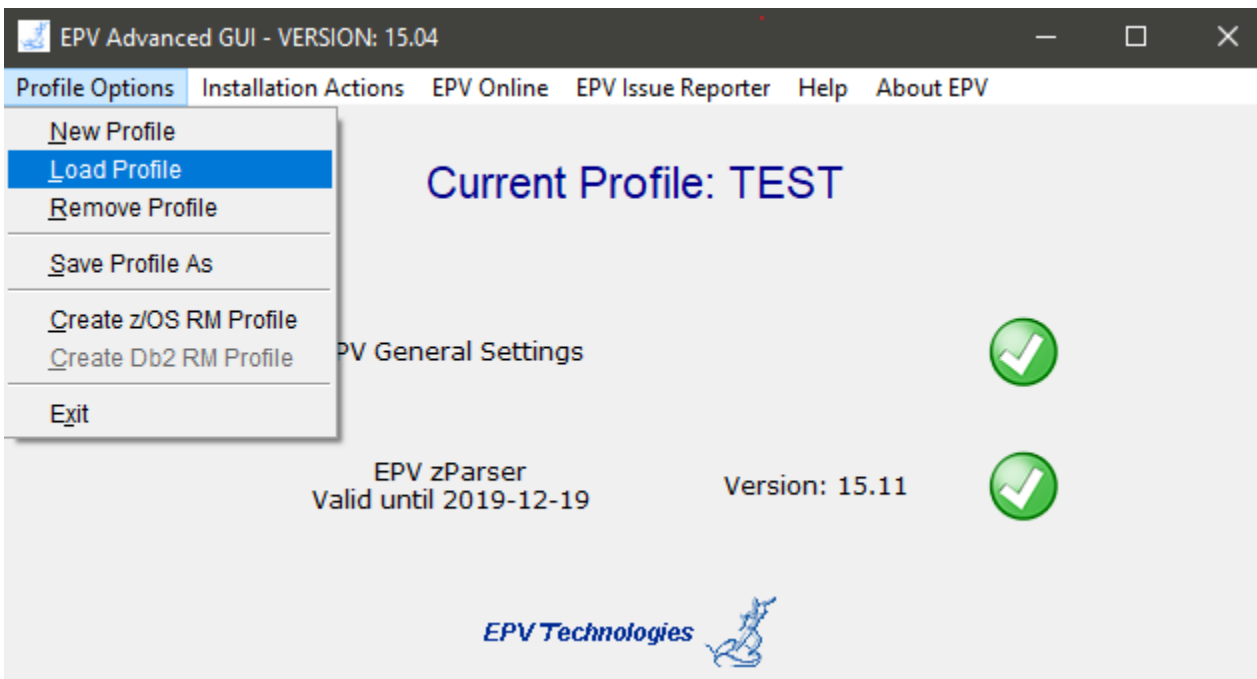


Figure 1



2) Select 'Installation Actions' => 'EPV zParser Windows Service' => 'Create Service'

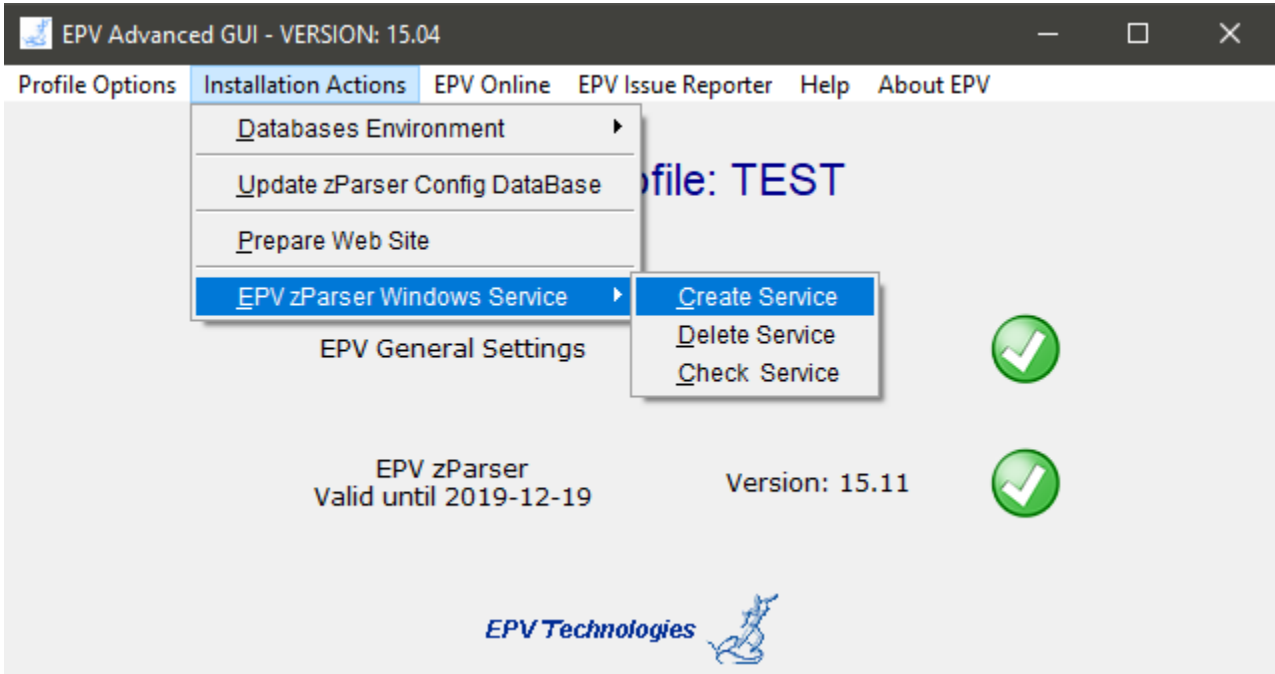


Figure 2

If the creation of the service ends fine, you'll see the message shown in Figure 3.

The service creation adds the following key in the registry:
HKEY_LOCAL_MACHINE\SYSTEM\CurrentControlSet\Services\EPVzParser_*\$ProfileName*

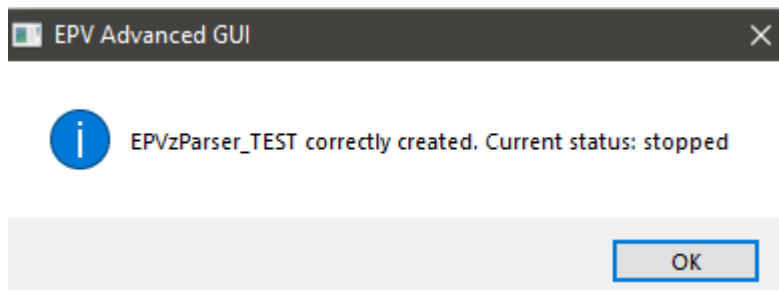


Figure 3



- 3) Open the Windows Service panel through the Control Panel or by typing *cmd* in the Command Prompt box and then the *services.msc* command.
- 4) Select the EPVzParser_ *\$ProfileName* service, right click on it, select the Property option and then select the Log On tab.
- 5) In the Log On tab, specify which kind of Account will be used to start the service: type the user name in the object name box, verify it by clicking on the Check Names button on the right and then click on the Ok button

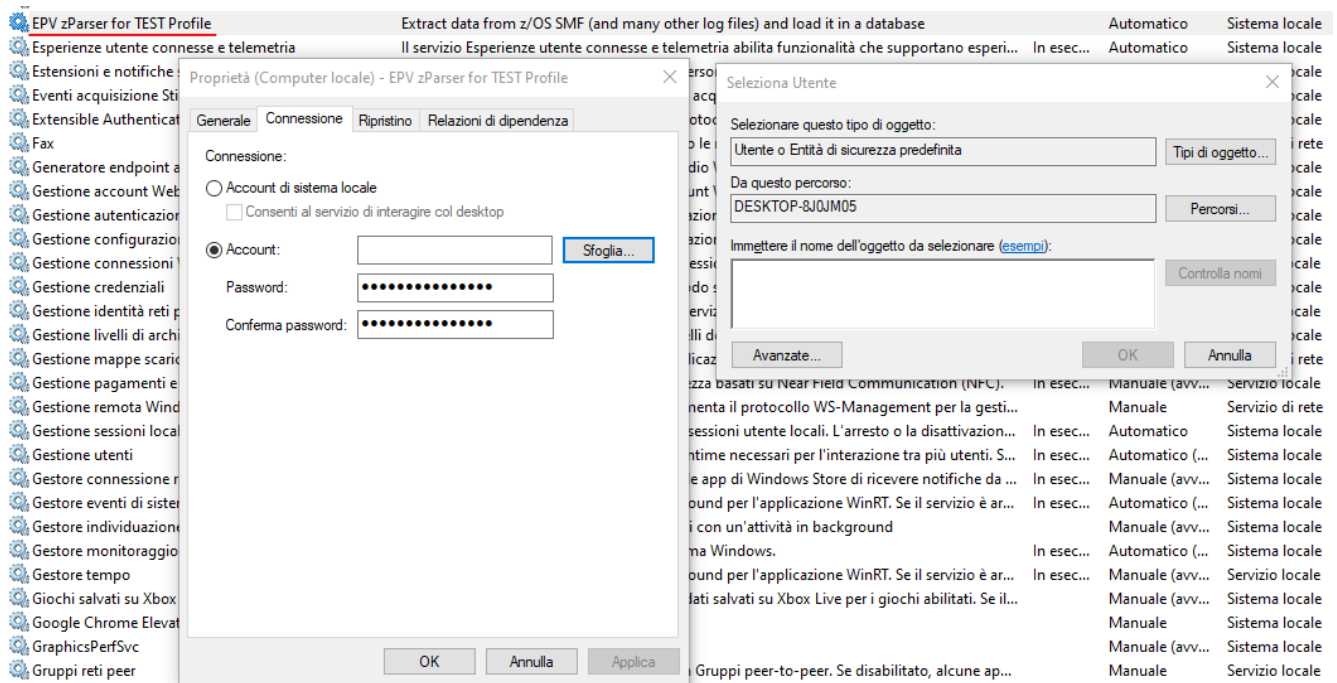


Figure 5

- 6) Click the Ok button in the Log On tab. The configuration ends here.



To start the service, you only need to click on the ‘Start’ button placed on the left.

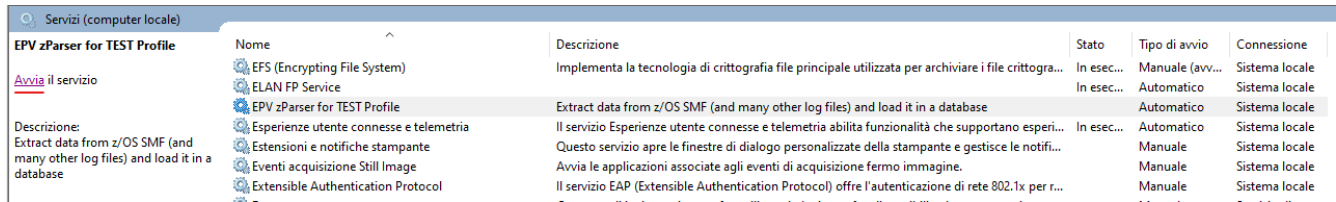


Figure 6

If you get no warning or error messages, you should see the EPVzParserAgentsHandler process running in the Windows Task Manager.

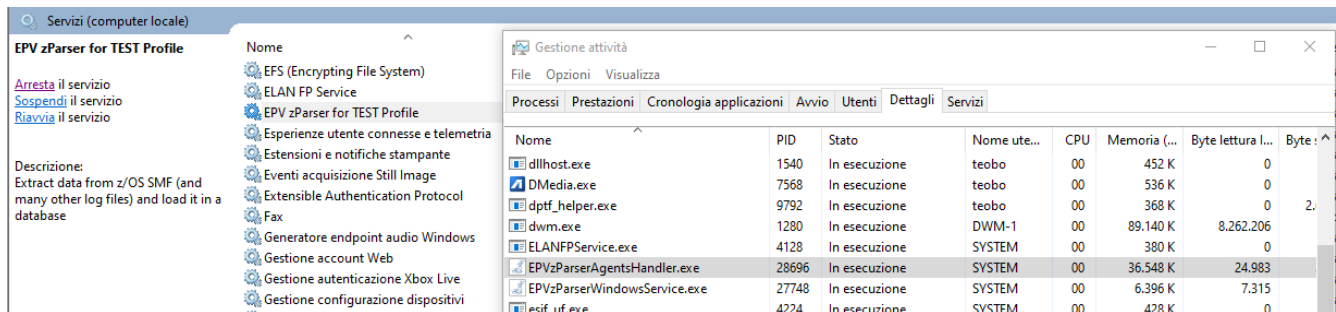


Figure 7



2 EPV zParser Service in Linux

In this manual we refer to the Linux Red-Hat or Fedora operating systems. For other UNIX-like operating systems, please contact EPV support.

There are two kind of services that you can create: SystemV (SysVinit) and SystemD. SystemV (SysVinit) is the old method that we do not suggest to use anymore: initscripts are no longer receiving any testing and support has been dropped from various Linux packages. Any users still using them should switch to SystemD.

Anyway, if you still want to use this type of service, we'll give you instructions here below.

Please notice that every operation on the Linux services requires root privileges.

2.1 SystemV (SysVinit) service - **deprecated**

To create and configure the service:

- 1) Login as *root*
- 2) Copy the 'epvzparser' service script from `$EPVROOT/PRODUCTS/EPVZPARSER_V15/PARSER_AGENT/SYSTEM_SERVICE/LinuxService/systemv` to `/etc/init.d`. You can rename the script basing on your needs: for example, in case you need to install multiple EPV services, you could create `epvzparser_${ProfileName1}`, `epvzparser_${ProfileName2}`, ...
- 3) Set file permissions to 755 (`chmod 755 epvzparser`)
- 4) Edit the script (`/etc/init.d/epvzparser`) in order to customize the following variables:
 - `SERVICE_NAME`; should have the same name of the script (default: `epvzparser`)
 - `OWNER`; the name of the user running EPV zParser
 - `PROF`; the name of the EPV profile currently used (`${ProfileName}`)
 - `EPVPATH`; the full path of the EPV installation directory (`$EPVROOT`)
- 5) Perform the following command in order to allow the service to start at system boot.
`chkconfig epvzparser on` (where 'epvzparser' is the name you gave to the script)

To start the service, you only need to run the following command:

- `service epvzparser start`
- or
- `systemctl start epvzparser`

If you get no warning or error messages, you should see the `EPVzParserAgentsHandler.PL` process running: `ps -ef | grep EPVzParserAgentsHandler.PL`



2.2 SystemD service - recommended

To create and configure the service:

- 1) Login as *root*
- 2) Copy the 'epvzparser.service' service script from `$EPVROOT/PRODUCTS/EPVZPARSER_V15/PARSER_AGENT/SYSTEM_SERVICE/LinuxService/systemd` to `/etc/systemd/system`. You can rename the script basing on your needs: for example, in case you need to install multiple EPV zParser services, you could create `epvzparser_${ProfileName1}.service`, `epvzparser_${ProfileName2}.service`, ...
- 3) Edit the `/etc/systemd/system/epv.service` script in order to customize the following variables:
 - Description: replace 'xxx' with your EPV Profile name (*\$ProfileName* in this manual). Example: `Description=EPV zParser for TEST Profile`
 - Environment: replace the provided default path with the path to the EPVROOT folder (*\$EPVROOT* in this manual). Example: `Environment="EPVPATH=/home/epv/EPVROOT"`
 - User: the name of the Linux user that should run EPV zParser. Example: `User=epv`
 - ExecStart: full path to the EPVzParserAgentsHandler.sh script that will be run by the service. Example: `/home/epv/EPVROOT/USERPROFILE/TEST/EPVZPARSER/PROCS/AGENT_PROCS/EPVzParserAgentsHandler.sh`
- 4) Edit `$EPVROOT/USERPROFILE/$ProfileName/EPVZPARSER/PROCS/AGENT_PROCS/EPVzParserAgentsHandler.sh` by removing the `&` character from the following line: `perl EPVzParserAgentsHandler.PL "$EPVPATH/USERPROFILE/$ProfileName" "AGENT" &`
- 5) Perform the following command in order to allow the service to start at system boot: `systemctl enable epvzparser.service`

To start the service, you only need to run the following command: `systemctl start epvzparser.service`

If you get no warning or error messages, you should see the EPVzParserAgentsHandler.PL process running: `ps -ef | grep EPVzParserAgentsHandler.PL`



3 Customer support

For any technical problem with or question about EPV products, please write an email to:

epv.support@epvtech.com

For any other issue about EPV products, please write an email to:

epv.info@epvtech.com



Related documentation

The following manuals complement the information provided in this manual:

- *EPV zParser V15 Installation and Customization*
- *EPV V15 Messages and Codes*